

2009-2010 Influenza Season Summary



Total number of reported influenza cases: **3,259**

Total number of reported cases by type of influenza:

Influenza H1N1 (2009): **543**

Influenza H1N1: **0**

Influenza H3N2: **1**

Influenza unspecified type A: **2,678**

Influenza B: **26**

Influenza type unspecified: **11**

Age range of reported influenza cases: **0.01 years – 87.76 years**

Median age of reported influenza cases: **13 years**

Number of reported influenza cases by age group:

≤10 years: **1,384** (<1 = **128**, 1-5 = **647**, 6-10 = **609**)

11-19 years: **879**

20-24 years: **258**

25-34 years: **300**

35-44 years: **148**

45-54 years: **179**

55-64 years: **68**

65+ years: **43**

Gender breakdown of reported influenza cases:

Male: **51%** (1,649)

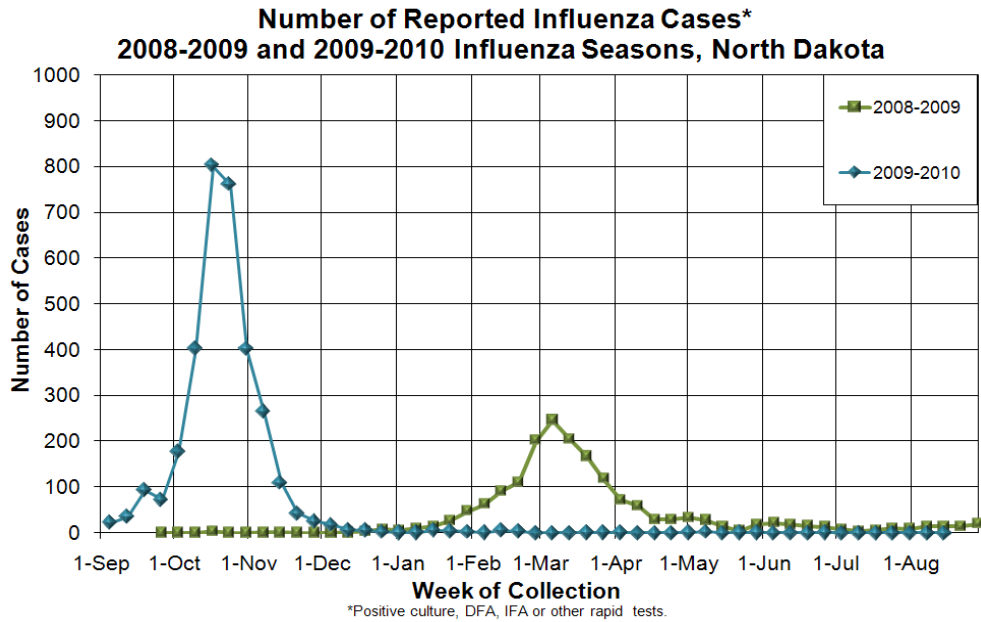
Female: **49%** (1,610)

County	Flu count
Adams	14
Barnes	47
Benson	16
Billings	0
Bottineau	11
Bowman	22
Burke	5
Burleigh	618
Cass	305
Cavalier	32
Dickey	39
Divide	9
Dunn	15
Eddy	11
Emmons	23
Foster	24
Golden Valley	5
Grand Forks	161

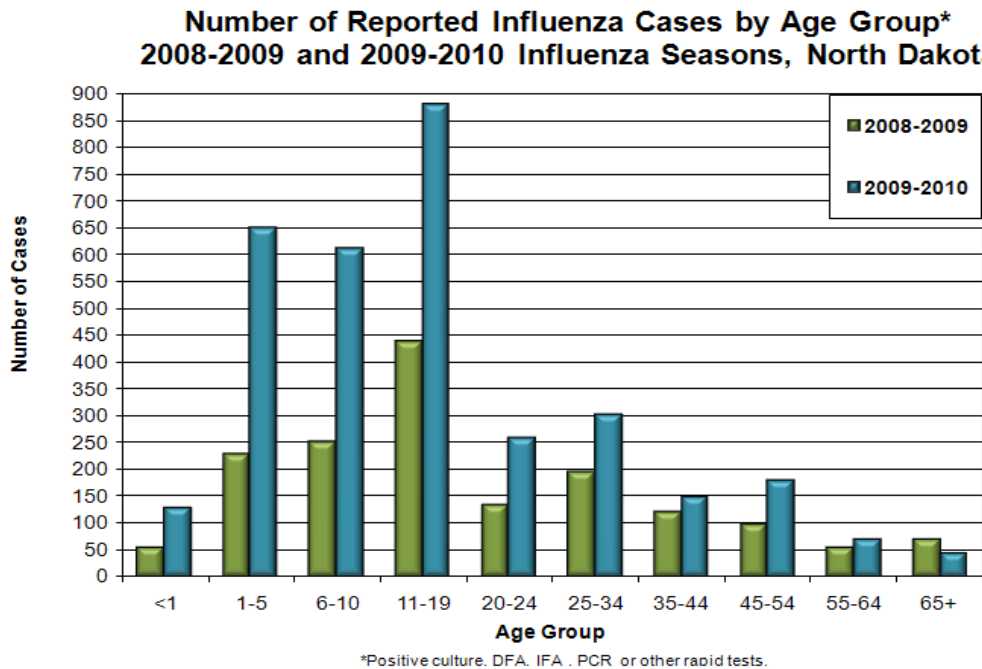
County	Flu count
Grant	11
Griggs	4
Hettinger	10
Kidder	9
La Moure	26
Logan	27
McIntosh	12
McHenry	23
McKenzie	41
McLean	63
Mercer	72
Morton	243
Mountrail	46
Nelson	7
Oliver	12
Pembina	100
Pierce	16
Ramsey	26

County	Flu count
Ransom	14
Renville	0
Richland	79
Rolette	38
Sargent	14
Sheridan	4
Sioux	61
Slope	1
Stark	135
Steele	5
Stutsman	236
Towner	1
Trail	33
Walsh	132
Ward	221
Wells	21
Williams	159

Influenza Cases 2008-2009 vs. 2009-2010 Seasons



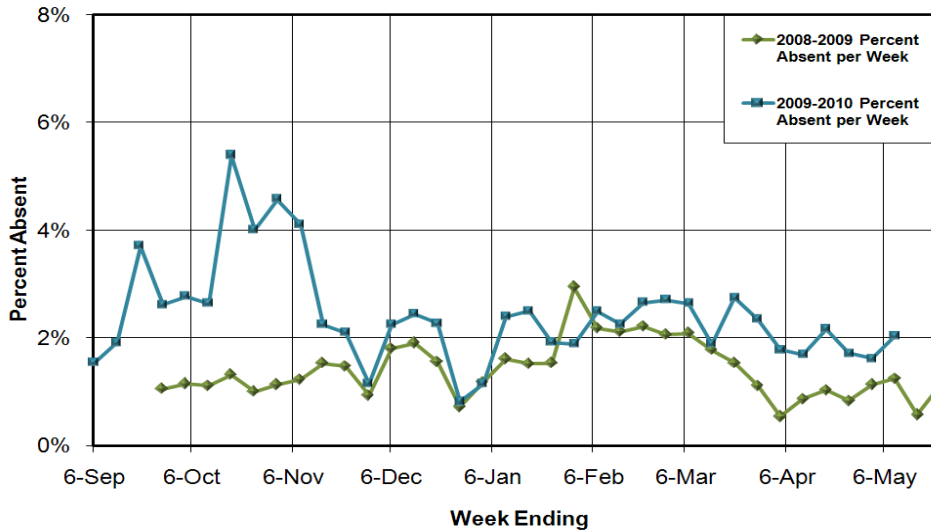
During the 2009-2010 influenza season, 3,259 influenza cases were identified by viral culture, DFA, IFA, PCR or other rapid test methods. Reported influenza cases by type are as follows: H1N1 2009 (543) H1N1 (0), H3N2 (1), unspecified type A (2,678), type B (26) and unknown type (11). The 2009-2010 influenza season peaked the week ending October 17, 2009.



During the 2009-2010 influenza season, the largest number of positive cases was reported in the 11-19 year age group (879). Around 42% percent (1,384) of the positive cases were in children aged 10 and under. Those ages 11-19 years made up 27% percent (879) of the positive cases.

School Absenteeism Surveillance

**School Absenteeism Surveillance Program*
Percent of Students Absent Due to Illness
North Dakota 2008-2009 and 2009-2010 School Year**

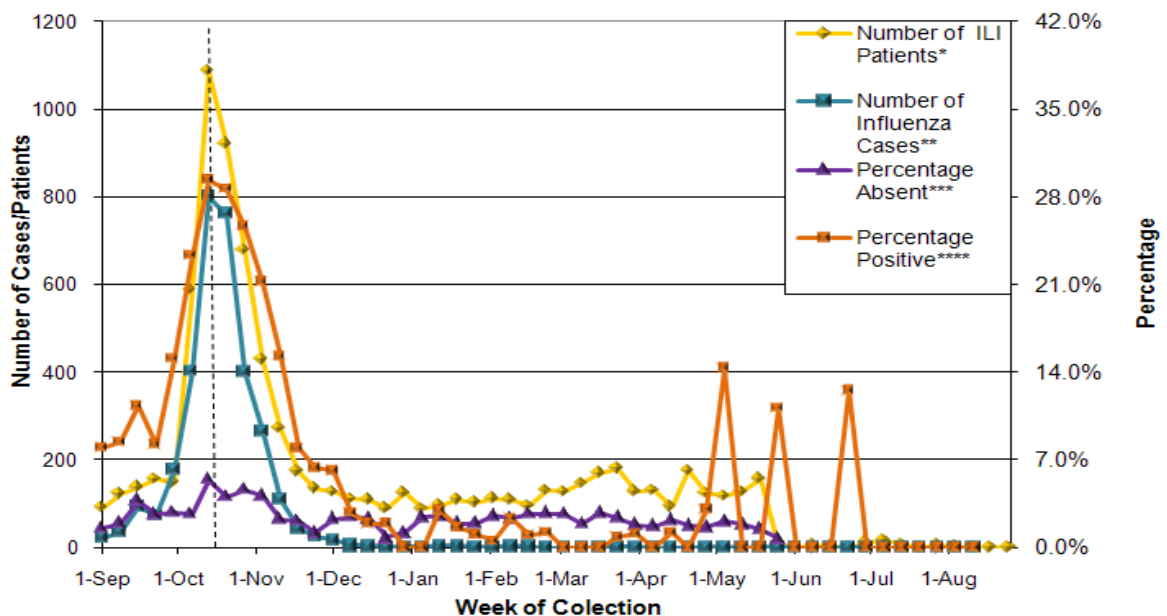


* Selected schools are participating in the 2008-2009 School Absenteeism Reporting. Variances in absenteeism may occur due to holidays and other school closings.

Sixteen selected schools participated in the 2009-2010 School Absenteeism Surveillance Program. School absenteeism due to illness peaked the week ending October 17, 2009.

Combined Chart Influenza Surveillance

Reported Influenza Cases vs. Reported ILI Cases vs. School Absenteeism vs. Laboratory Testing, 2009-2010 Influenza Season, North Dakota



*Influenza-like Illness is defined as fever of > 100 °F with cough and/or sore throat
 **IPositive culture, DFA, IFA or other rapid tests
 ***Schools report the number of students absent due to illness
 ****Laboratory percent positive influenza tests