

# 2008-2009 Influenza Season Summary



Total number of reported influenza cases: **1,755**

Total number of reported cases by type of influenza:

Influenza H1N1 (2009): **107**

Influenza H1N1: **88**

Influenza H3N2: **17**

Influenza unspecified type A: **1,133**

Influenza B: **393**

Influenza type unspecified: **17**

Age range of reported influenza cases: **0.01 years – 104.98 years**

Median age of reported influenza cases: **17 years**

Number of reported influenza cases by age group:

≤10 years: **553** (<1 = **55**, 1-5 = **236**, 6-10 = **262**)

11-19 years: **474**

20-24 years: **155**

25-34 years: **218**

35-44 years: **127**

45-54 years: **105**

55-64 years: **55**

65+ years: **68**

Gender breakdown of reported influenza cases:

Male: **50%** (869)

Female: **50%** (886)

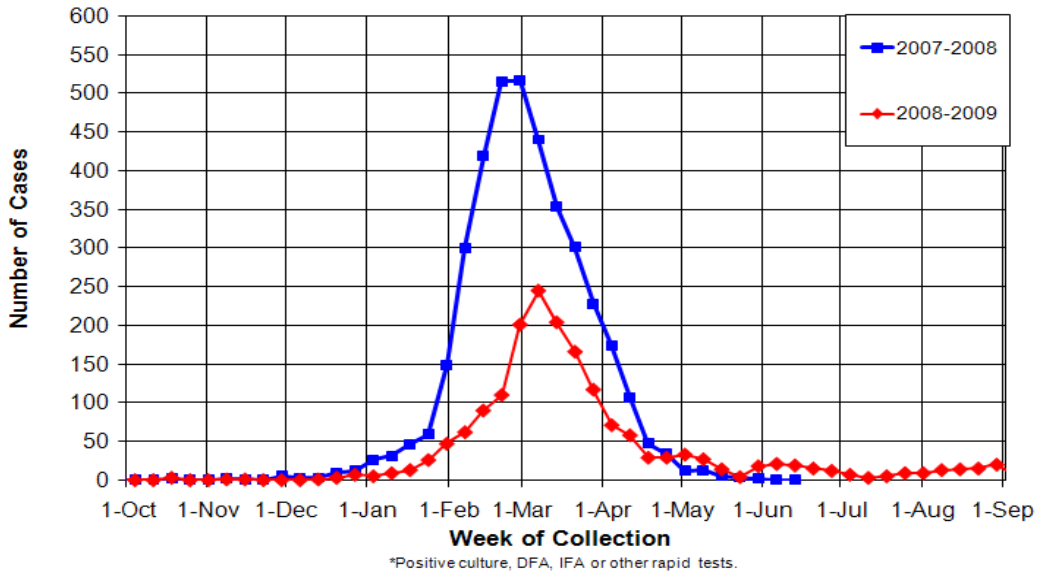
County	Flu count
Adams	7
Barnes	12
Benson	4
Billings	0
Bottineau	2
Bowman	34
Burke	3
Burleigh	371
Cass	261
Cavalier	5
Dickey	12
Divide	1
Dunn	18
Eddy	8
Emmons	3
Foster	10
Golden Valley	1
Grand Forks	108

County	Flu count
Grant	2
Griggs	32
Hettinger	7
Kidder	3
La Moure	9
Logan	13
McIntosh	8
McHenry	6
McKenzie	64
McLean	50
Mercer	46
Morton	117
Mountrail	7
Nelson	1
Oliver	8
Pembina	59
Pierce	1
Ramsey	8

County	Flu count
Ransom	9
Renville	2
Richland	14
Rolette	13
Sargent	7
Sheridan	2
Sioux	8
Slope	0
Stark	101
Steele	6
Stutsman	61
Towner	0
Traill	53
Walsh	14
Ward	115
Wells	7
Williams	42

# Influenza Cases 2007-2008 vs. 2008-2009 Seasons

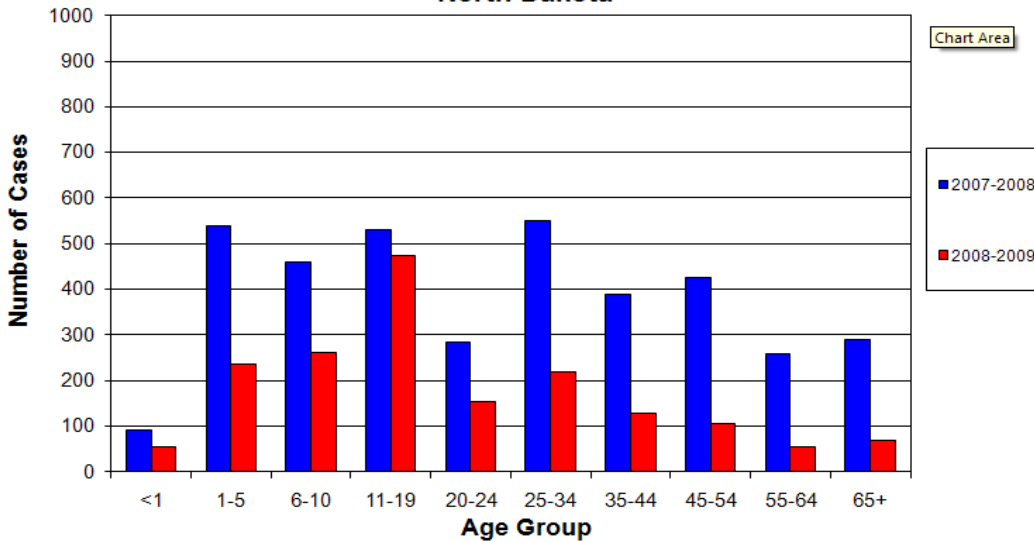
**Number of Reported Influenza Cases\*  
2007-2008 and 2008-2009 Influenza Seasons  
North Dakota**



\*Positive culture, DFA, IFA or other rapid tests.

During the 2008-2009 influenza season, 1,755 influenza cases were identified by viral culture, DFA, IFA or other rapid test methods. Reported influenza cases by type are as follows: H1N1 2009 (107) H1N1 (88), H3N2 (17), unspecified type A (1,133), type B (393) and unknown type (17). The 2008-2009 influenza season peaked the week ending March 7, 2009.

**Number of Reported Influenza Cases by Age Group\*  
2007-2008 and 2008-2009 Influenza Seasons  
North Dakota**

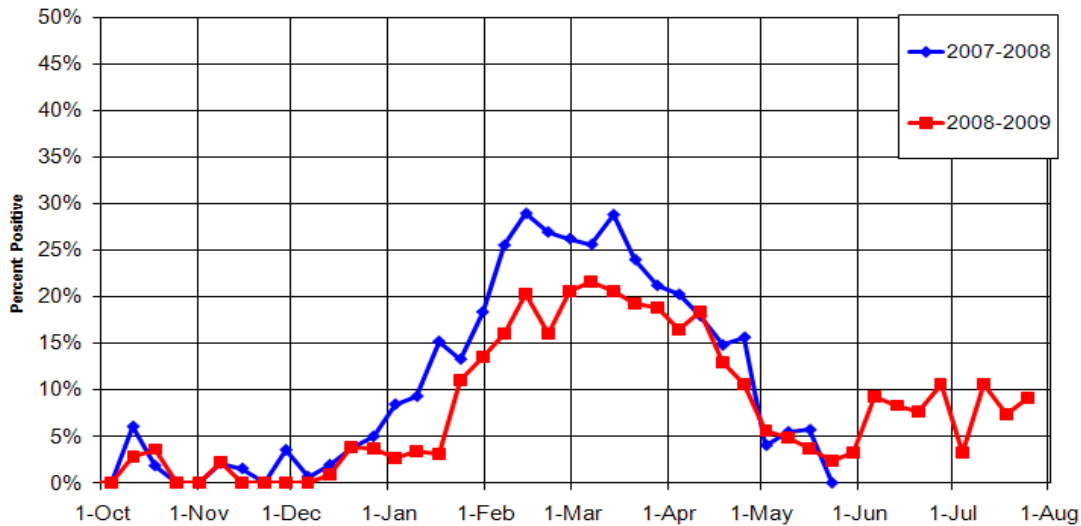


\*Positive culture, DFA, IFA or other rapid tests.

During the 2008-2009 influenza season, the largest number of positive cases was reported in the 11-19 year age group (474). Around 32% percent (553) of the positive cases were in children aged 10 and under. Those ages 11-19 years made up 27% percent (474) of the positive cases.

# Laboratory Influenza and RSV Testing

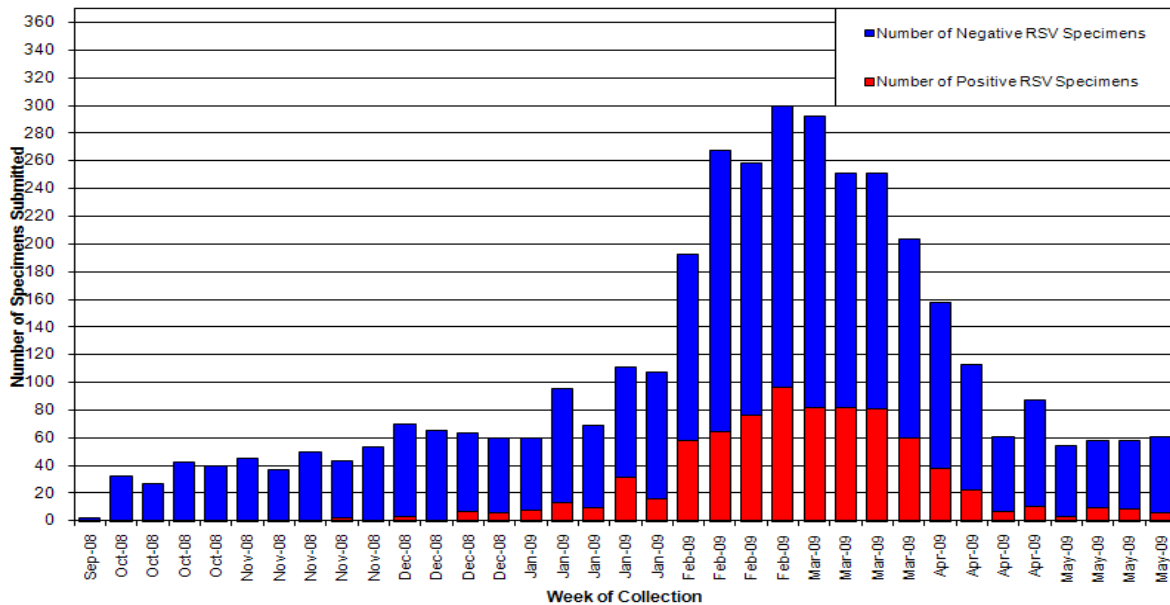
**Results of Laboratory Influenza Testing\***  
**Selected North Dakota Laboratories**  
**2007-2008 and 2008-2009 Influenza Season**



\*Positive culture, DFA, IFA or other rapid tests compared to total number of Influenza specimens tested. The data received are aggregate numbers and may include out of state residents.

Twenty-six selected sentinel laboratories throughout the state submit influenza testing data to the NDDoH. Positive laboratory tests reported from these twenty-six laboratories peaked (214 tests) the week ending March 7, 2009. The percent positive was at the highest the same week at 21.57%

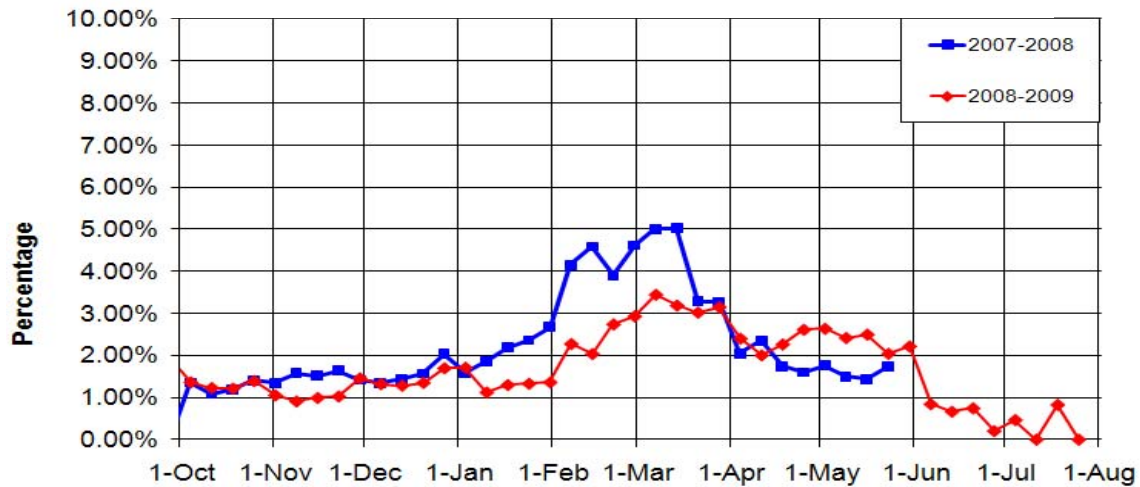
**Results of Laboratory RSV Testing**  
**Selected North Dakota Laboratories**  
**2008-2009 Influenza Season**



Fifteen selected sentinel laboratories throughout the state submit respiratory syncytial virus (RSV) testing data to the NDDoH. Positive laboratory tests peaked the week ending February 28, 2009 with 97 positive tests. The percent positive was at the highest the week ending March 14, 2009 (32.67%).

# Influenza Sentinel Provider Program

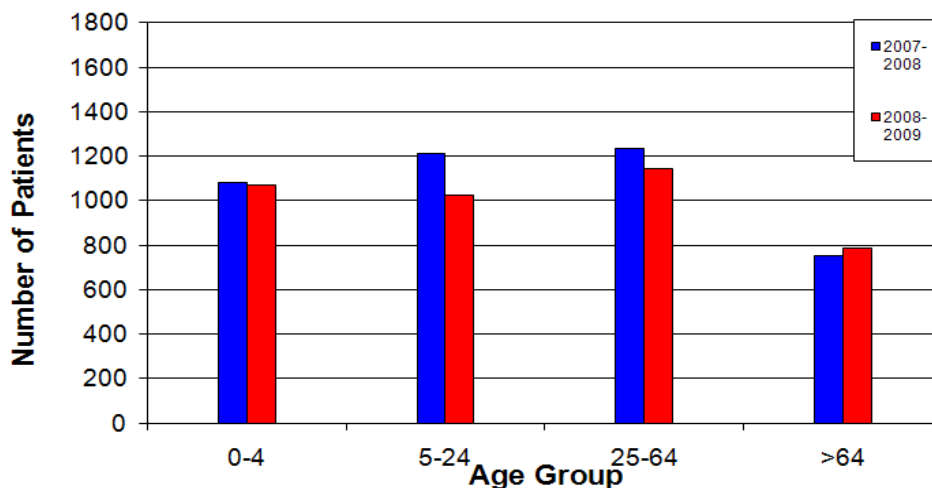
**Influenza Sentinel Provider Surveillance Program  
Percent of Visits Due to Influenza-like Illnesses\*  
2007-2008 and 2008-2009 Influenza Seasons, North Dakota**



\*Influenza-like Illness is defined as fever of > 100 °F with cough and/or sore throat

Twenty private healthcare providers, clinics or ERs located throughout the state submit influenza-like illness (ILI) data to the NDDoH as part of the ILINet sentinel provider program. The number of reported cases of ILI peaked (205) the week ending March 7, 2009 as did the percentage of ILI patients.

**Influenza Sentinel Physician Surveillance Program  
Number of Patients with Influenza-like Illnesses\* by Age Group  
2007-2008 and 2008-2009 Influenza Seasons  
North Dakota**

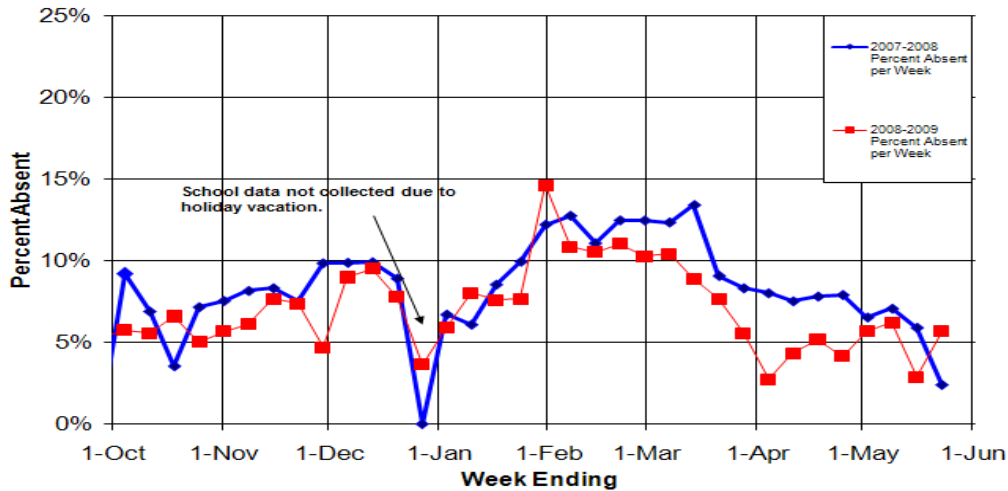


\*Influenza-like Illness is defined as fever of > 100 °F with cough and/or sore throat

Data provided by the twenty sentinel providers indicated that most of the patients seen in their clinic with influenza-like illness range from very young to 64 years of age. This is consistent with the age data received on the reported positive cases with no clear dominant age group.

# School Absenteeism Surveillance

**School Absenteeism Surveillance Program\*  
Percent of Students Absent Due to Illness  
North Dakota 2007-2008 and 2008-2009 School Year**

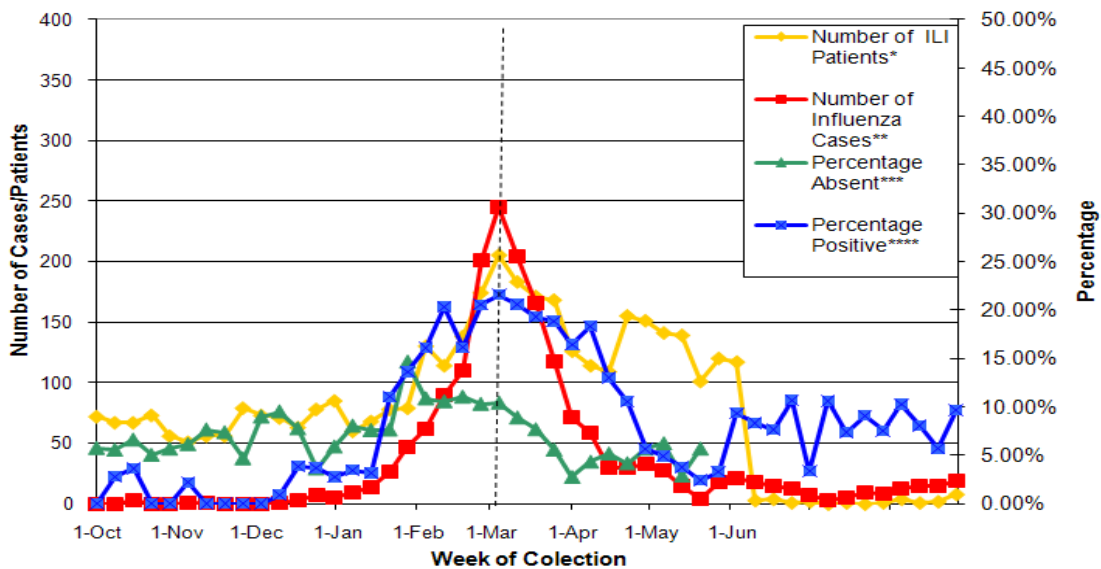


\* Selected schools are participating in the 2008-2009 School Absenteeism Reporting. Variances in absenteeism may occur due to holidays and other school closings.

Eleven selected schools participated in the 2008-2009 School Absenteeism Surveillance Program. School absenteeism due to illness peaked the week ending January 31, 2009.

# Combined Chart Influenza Surveillance

**Reported Influenza Cases vs. Reported ILI Cases vs. School Absenteeism vs. Laboratory Testing  
2008-2009 Influenza Season, North Dakota**



\*Influenza-like illness is defined as fever of > 100 °F with cough and/or sore throat  
\*\*IPositive culture, DFA, IFA or other rapid tests  
\*\*\*Schools report the number of students absent due to illness  
\*\*\*\*Laboratory percent positive influenza tests